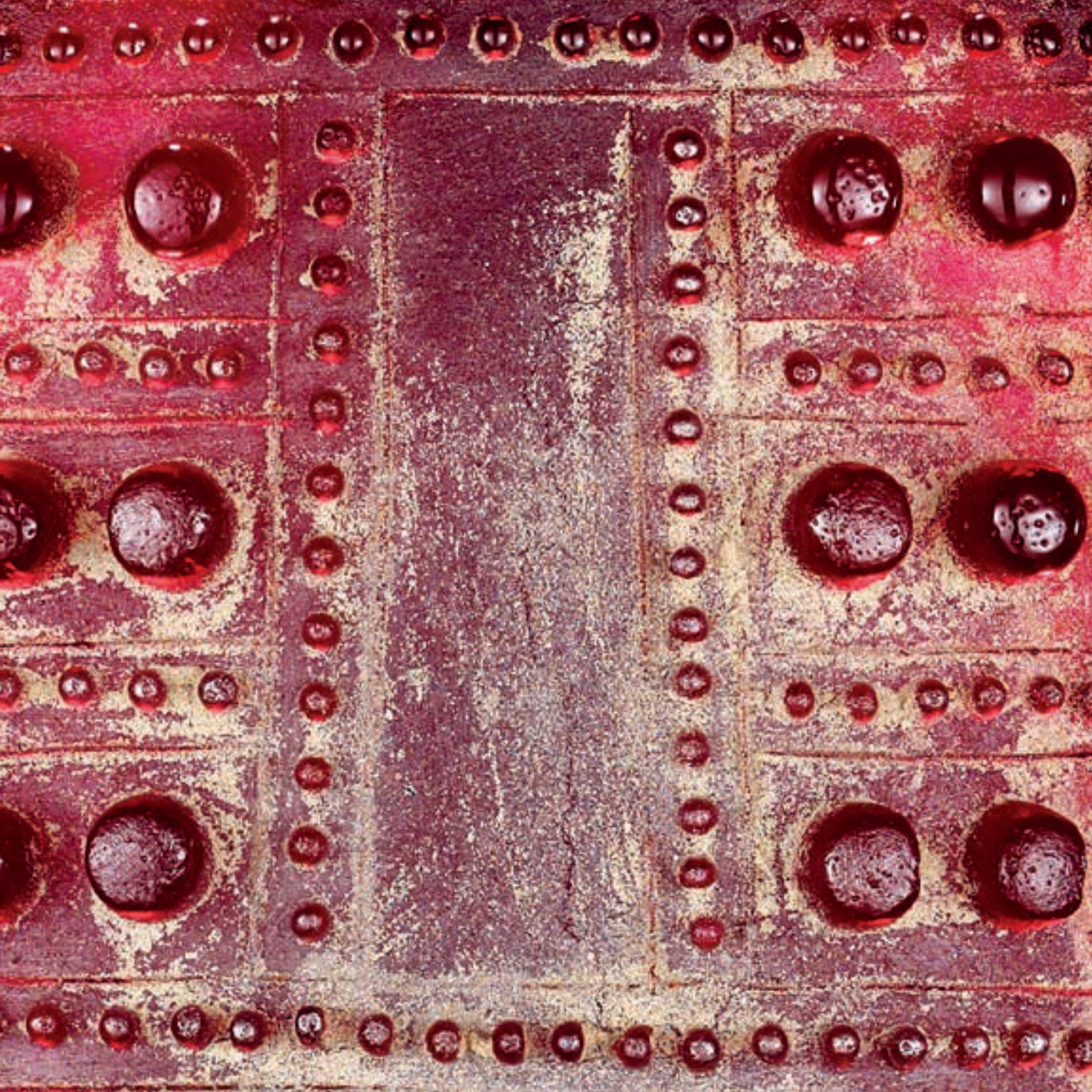




MARLENE ROSE

cultural blueprints



MARLENE ROSE

cultural blueprints

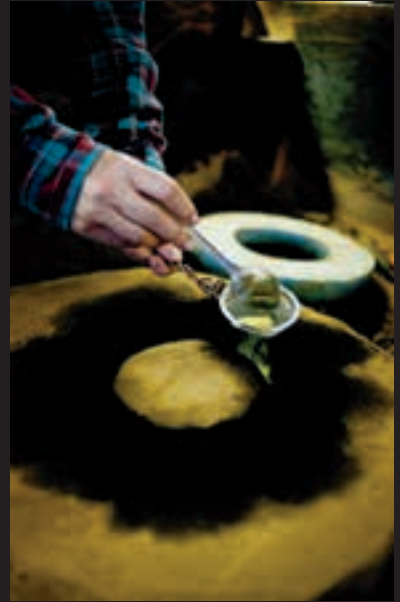
Marlene Rose's unique work refers to a personal system of symbols that derive their power and strength from the common core shared with our ancestors. Rose rides this ancient energy, and, through the glass, reaches out into time, linking the fragments of what she sees and her part-remembered memories of the past. These glimpses become her visions, and her visions soar into the future, frozen forever in the icy-hot stillness of the glass.



Buddha Wall

54 × 38 × 9"

sand cast glass,
copper, steel





Rose uses a process based on the thousands-year-old tradition of bronze casting, adapted only recently for glass. She pours liquid molten glass into a carefully prepared sand mold, then cools it for six days or more in a specially controlled oven before cracking open the mold and seeing what she has made.

This method of making the glass aligns perfectly with the imagery she sees. The rawness and the immediacy of working the sand; the thrill and danger of pouring this magical lava, thousands of degrees hot; and the patient gestation of the piece in the annealing oven.

These processes all inform, and are integral in, the final finished creation.

Orange Painted Bell

32 × 22 × 7"

sand cast glass,
copper, steel





Color Progression
30 × 12 × 3"

sand cast glass, steel



Pyramid Quilt Square
19 × 7 × 3"

sand cast glass, steel



Triangles
19 × 7 × 3"

sand cast glass, steel

All shown here are
self-illuminated



African Mask Trio

60 × 18 × 4"

sand cast glass,
copper, steel

Self-illuminated

Ghost Cecile Series

Metallic & White Ghost Cecile
58 × 15 × 12"

Aqua Blaze Ghost Cecile
58 × 15 × 12"

Metallic, Celadon & White Ghost Cecile
58 × 15 × 12"

Metallic & Celadon Ghost Cecile
58 × 15 × 12"

Merlot & White Ghost Cecile
58 × 15 × 12"

sand cast glass, steel





Aqua Oh Freestanding with Rings
76 × 28 × 12"

sand cast glass,
copper, steel





Vertical Color Progression Freestanding
69 × 16 × 12"

sand cast glass, steel



Vaseline Reeds

19 × 22 × 9"

sand cast glass,
copper, steel



Lime Green Temple Buddha

16 × 11 × 8"

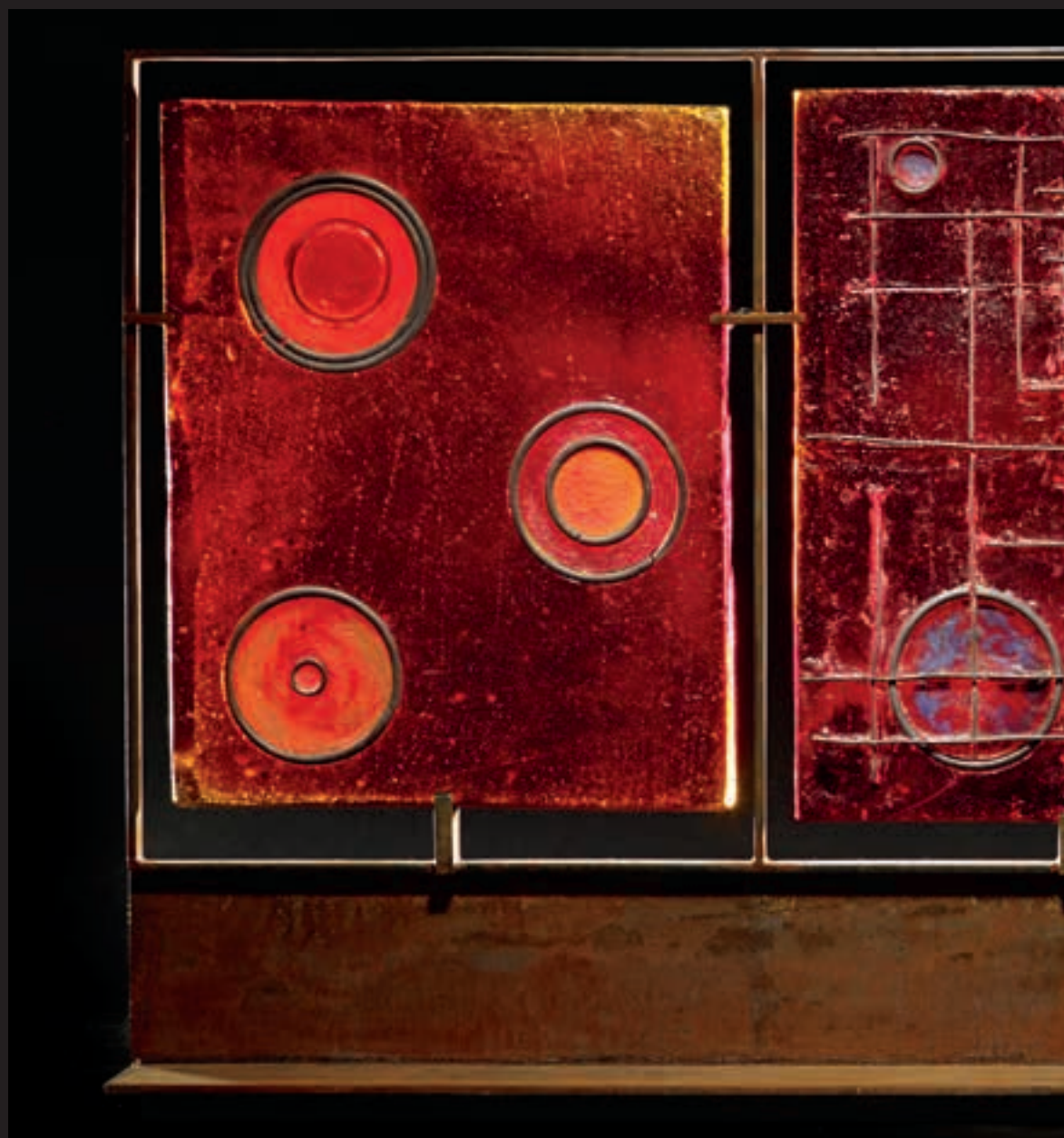
sand cast glass, steel

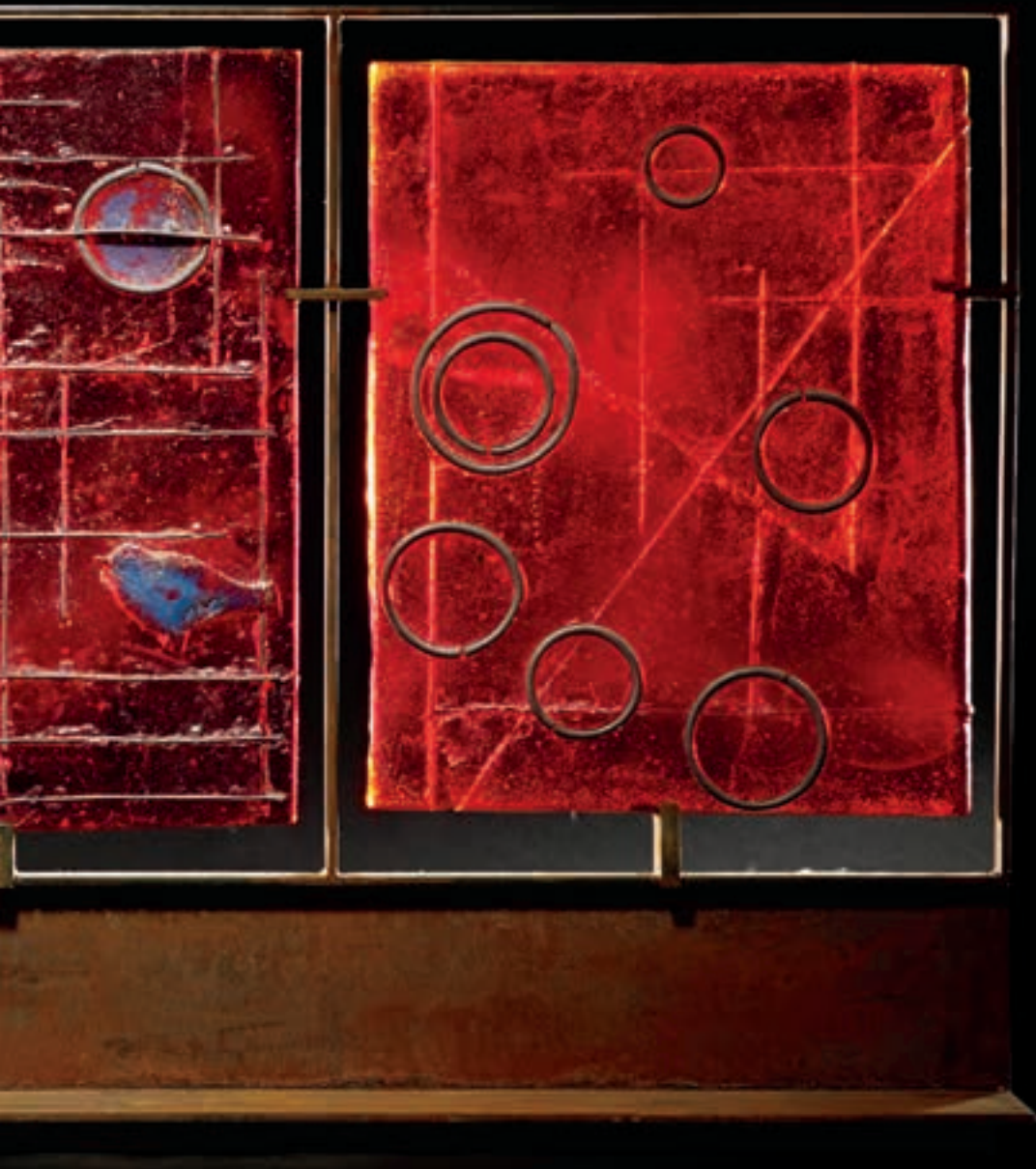


Parasol Buddha

39 × 17 × 10"

sand cast glass,
copper, steel





Red Triptych

27 x 47 x 9"

sand cast glass,
copper, steel

Amber Lotus Buddha with Halo

39 × 17 × 10"

sand cast glass,
copper, steel





Celestial Cherry Blossom Panel

28 × 30 × 10"

sand cast glass,
copper, steel



Sun Over the City

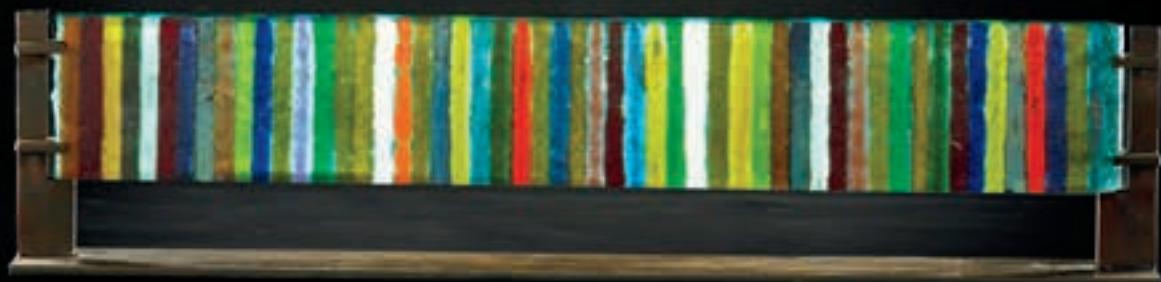
25 × 18 × 6"

sand cast glass,
copper, steel

Aqua Horizontal Color Progression

7 × 29 × 4"

sand cast glass, steel





Aqua Thelma Barred

59 × 10 × 6"

sand cast glass,
copper, steel





Butterfly Flutter

Wingspan ranges
from 10" – 32" wide,
heights vary

sand cast glass,
copper, steel

Bell Pyramid

48 × 72 × 8"

sand cast glass,
copper, steel





Water Birdbath Buddha
65 × 15 × 8"

sand cast glass,
copper, steel

Block Stratum

9 × 21 × 5"

sand cast glass, steel





Pyramid Quilt Freestanding

55 × 14 × 9"

sand cast glass, steel





**Bookshelf Buddha
Series**

Halo
Bookshelf Buddha
16 × 13 × 4"

Square
Bookshelf Buddha
14 × 6 × 5"

Mini Square
Bookshelf Buddha
10 × 4 × 4"

Framed
Bookshelf Buddha
16 × 10 × 5"

Mini Cylinder
Bookshelf Buddha
10 × 4 × 4"

Cylinder
Bookshelf Buddha
14 × 6 × 5"

Lotus
Bookshelf Buddha
19 × 11 × 5"

sand cast glass,
copper, steel

**Vaseline Box Buddha
Installation**
sculpture 34 × 14 × 6"

Collection of Suzanne
and Norman Cohn

sand cast glass,
copper, steel





**Large Eternity
Relic Installation**
sculpture 126 × 46 × 10"

Collection of Shawn
Estes and Doug Hundley

On loan to the Museum
of Fine Arts, St. Peters-
burg, FL

sand cast glass,
copper, steel



MARLENE ROSE

cast glass sculptor

CURRICULUM VITAE

Born: December 5, 1967

EDUCATION

CCAC, Oakland, CA (M.F.A.)

Pilchuck Glass School, Seattle, WA

Tulane University, New Orleans, LA (B.F.A. with Honors, Glass, Newcomb College)

Pomfret School, Pomfret, CT

Greenvale School, Glen Head, NY

GRANTS

National Endowment of the Arts (2007)

SELECTED MUSEUM EXHIBITIONS

Longboat Key Center for the Arts, Sarasota, FL *"Radiant Heat/
Translucent Light"* (2014)

National Liberty Museum, Philadelphia, PA *"Women in Glass"* (2013)

Krasl Museum, Saint Joseph, MI *"Primordial Inspirations"* (2012)

Museum of Fine Art, St. Petersburg, FL *"Global & Local: Studio and
Contemporary Glass on Florida's West Coast"* (2012)

Kalamazoo Museum of Arts, Kalamazoo, MI *"Expressions:
International Glass Invitational"* (2012)

Fort Collins Museum of Art, Ft. Collin, CO *"Colorado Collects Glass"* (2012)

Muskegon Museum of Art, Muskegon, MI *"Primal Inspirations,
Contemporary Artifacts"* (2011)

Museum of Science and Industry, Tampa, FL *"Earth Visions"* (2010)

Florida International Museum, St. Petersburg, FL *"In a New Light"* (2009)

Mobile Museum of Art, Mobile, AL *"GEN-X: Post-Boomers
and the New South"* (2008)

New Mexico Museum of Art, Santa Fe, NM *"Flux: Reflections on
Contemporary Glass"* (2008)

Gulf Coast Museum of Art, Largo, FL *"Ancient and Elemental"* (2007)

SELECTED PERMANENT COLLECTIONS

Leepa-Rattner Museum of the Arts, St. Petersburg, FL
Metro General Hospital, Cleveland, OH
National Gallery for Foreign Art, Sofia, Bulgaria
Mobile Museum of Art, Mobile, AL
Museum of Contemporary Art, Yerevan, Armenia
Muskegon Museum of Art, Muskegon, MI
Ritz-Carlton, Hong Kong
Seven Bridges, Greenwich, CT
University of Tampa, Tampa, FL

SELECTED ART FAIRS

Affordable London, London, England (2013)
Affordable New York, New York, NY (2013, 2012)
Affordable Singapore, Singapore (2013)
Art Greenwich, Greenwich, CT (2011)
Art Hamptons, Bridgehampton, NY (2013, 2012, 2011)
Art Miami, Miami, FL (2007, 2006, 2005)
Art Palm Beach, Palm Beach, FL (2013, 2012, 2011, 2010, 2009, 2008, 2007)
Art Philadelphia, Philadelphia, PA (2004)
Art Santa Fe, Santa Fe, NM (2009, 2008, 2007)
Art Toronto, Toronto, Canada (2005)

Continued - SELECTED ART FAIRS

ArtDC, Washington DC (2007)
Habatat International Invitational (2013, 2012, 2011, 2010, 2009, 2008)
Chicago Contemporary & Classic, Chicago, IL (2005)
LA Art, Los Angeles, CA (2013)
Miami International Art Fair, Miami, FL (2012, 2011)
San Francisco Fine Art Fair, San Francisco, CA (2012, 2011)
SCOPE Art Asia, Miami, FL (2012)
SCOPE New York, New York, NY (2013)
SOFA Chicago, Chicago, IL (2013, 2012, 2011, 2010, 2009, 2008, 2007, 2006, 2005, 2004, 2003)
SOFA NY, New York City, NY (2011, 2010, 2009, 2008, 2007, 2006, 2005)
SOFA Santa Fe, Santa Fe, NM (2011, 2010, 2009)
Spectrum, New York, NY (2013)
Wheaton Village, Millville, NJ (2011)

PHOTOGRAPHY CREDITS

Felix Kunze	<i>Cover & Pages 4, 5, 31, 32</i>
Jennifer Anderson	<i>Art Direction on Cover & Page 32</i>
David A. Monroe	<i>Pages 3, 6-27, 29, 30</i>





“The glass may look like a relic of some ancient time, but each piece holds inside itself the sum of the sharp shards of what I have seen, of unnamed emotions, of visions, concepts and memories.

These common threads of human imagery, passing through cultures and time... I am compelled to weave and recompose their nuances, all to communicate the immortal vibrancy of the human spirit.”

Marlene Rose

411 Cleveland Street #266, Clearwater, FL 33755 | 727-709-2620 | www.MarleneRoseGlass.com

